

# STIs

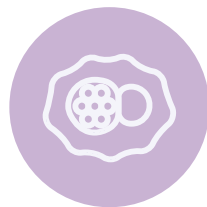
are on the rise

Speak to your patients about protection, testing & treatment

## Connecticut cases

### Chlamydia

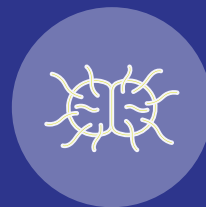
12,738 cases in 2022



over 55,400 cases since 2019

### Gonorrhea

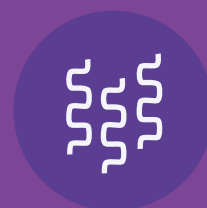
4,979 cases in 2022



12% increase since 2019

### Syphilis

248 cases in 2022



18% increase since 2019

### Congenital Syphilis

7 cases in 2022



133% increase since 2019

**1 out of 2**

sexually active youth in the US will have an STI by age 25

## Who's most at risk?



young people aged 15-24  
gay and bisexual men  
pregnant people  
racial and ethnic minority groups



for further info & valuable resources  
[std.endthesyndemicct.org](http://std.endthesyndemicct.org)

 CONNECTICUT  
Public Health



**Tell Everyone to Screen & Test**